

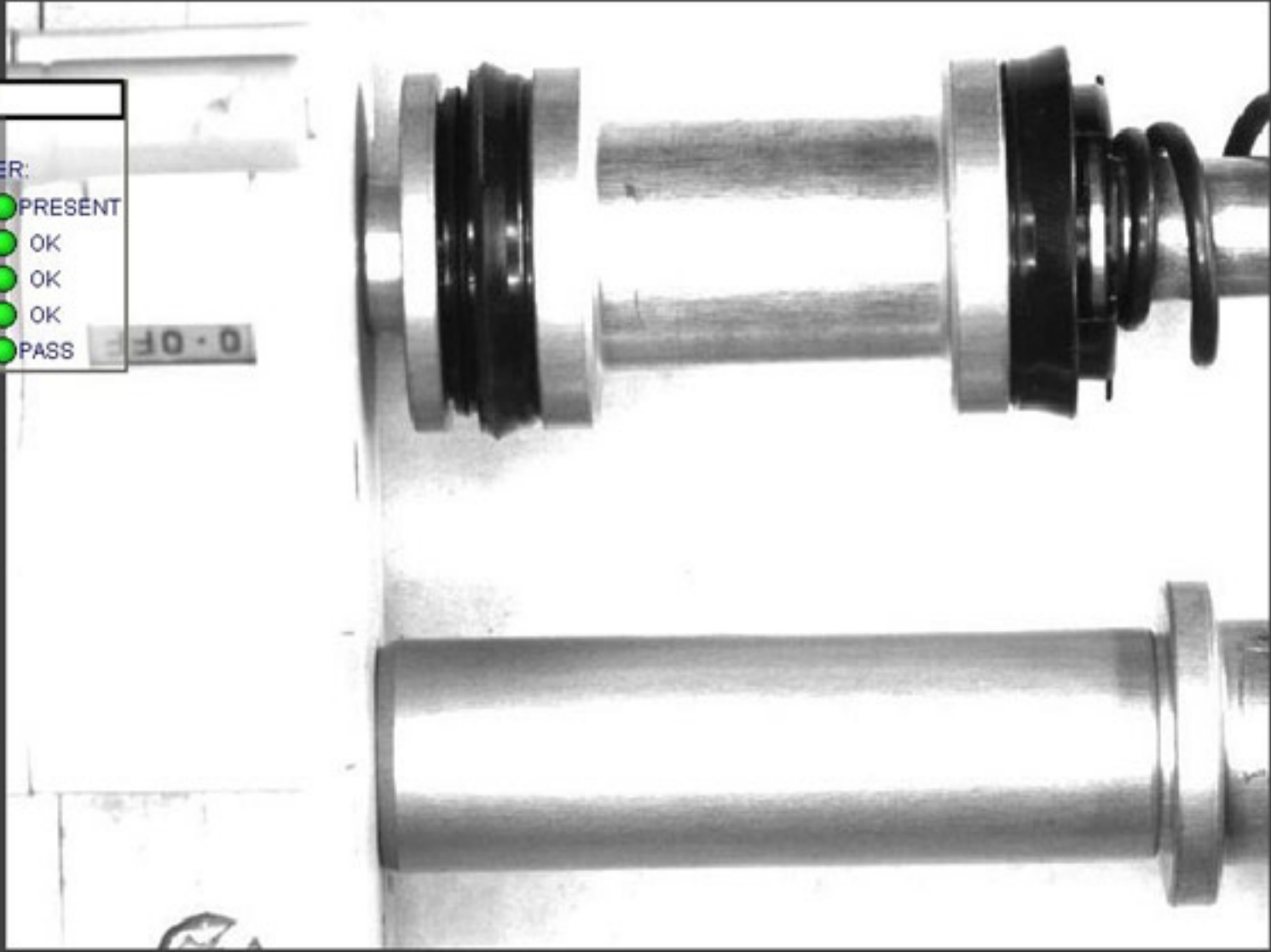
In-Sight Explorer - admin - [\_\_is5100\_0137af\_\_ - BI\_Plunger.job]

File Edit View Insert Format Image Sensor System Window Help

Arial 12 B / | +.0 -.0 | 100%

A66 = PLUNGER TEST

PLUNGER TEST	
DOUBLE SEAL PLUNGER:	
COMP STS:	● PRESENT
BOTTAM SEAL STS:	● OK
TOP SEAL STS:	● OK
SP. Retainer:	● OK
Overall Result:	● PASS



TITAN (Machine Building) 62.8 ms Offline

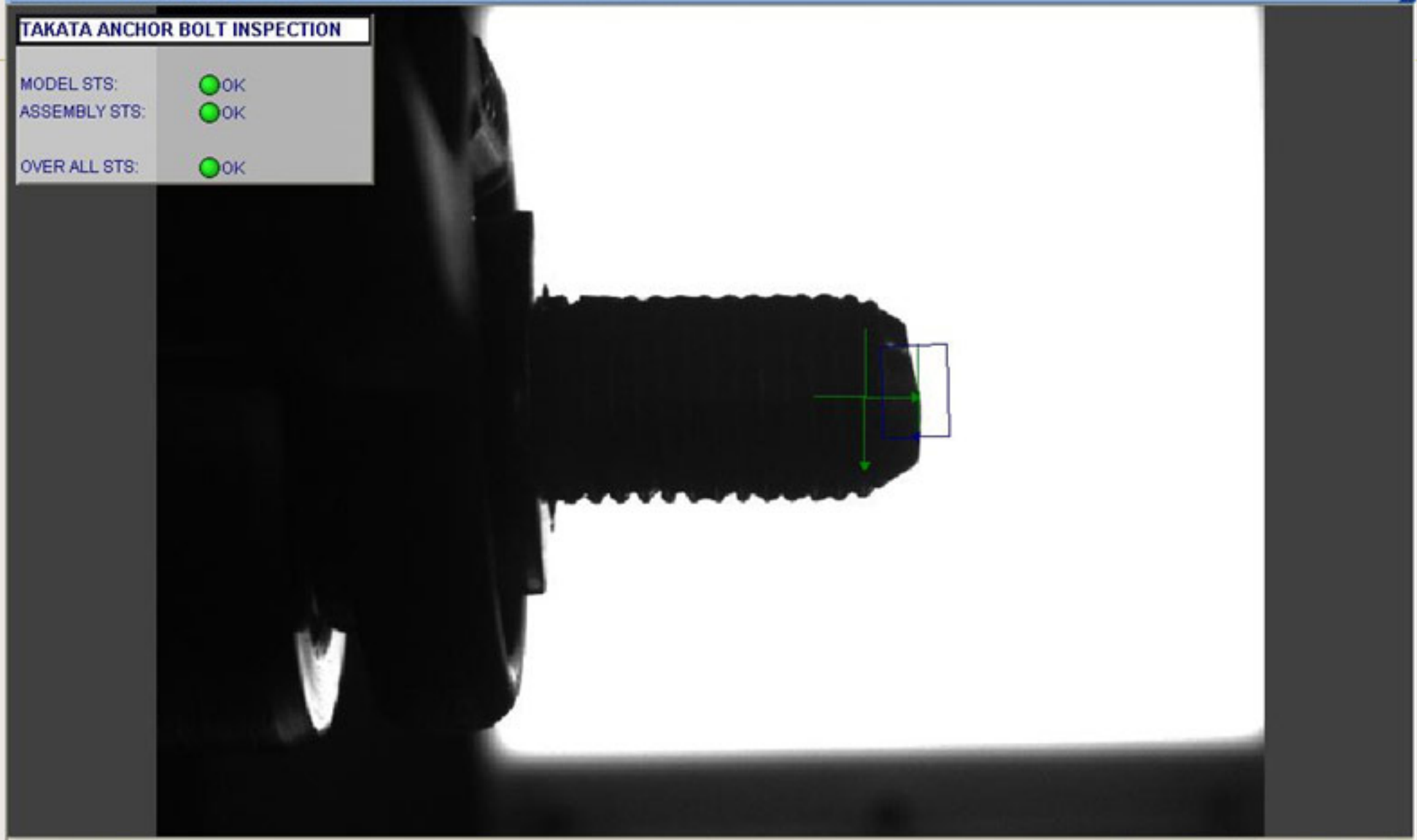
start In-Sight Explorer - ad... BI\_Plunger TITAN (Machine Buildi... 12:41 PM

In-Sight Explorer - admin - [ESP-T4-2 - ism1100 - F:\ROAD SHOW 2010\Altered takata 3 models\takata prg 2.job]

File Edit View Insert Format Image Sensor System Window Help

10 B /

A70 = TAKATA ANCHOR BOLT INSPECTION



TAKATA ANCHOR BOLT INSPECTION	
MODEL STS:	OK
ASSEMBLY STS:	OK
OVER ALL STS:	OK

Pixel Value @ (381,408) = 255 0.0 ms Offline

start Altered takata 3 m... Backups In-Sight Explorer - ... untitled - Paint 2:10 PM

In-Sight Explorer - admin - [ESP-T4-2 - ism1100 - F:\ROAD SHOW 2010\Altered takata 3 models\takata prg 2. job]

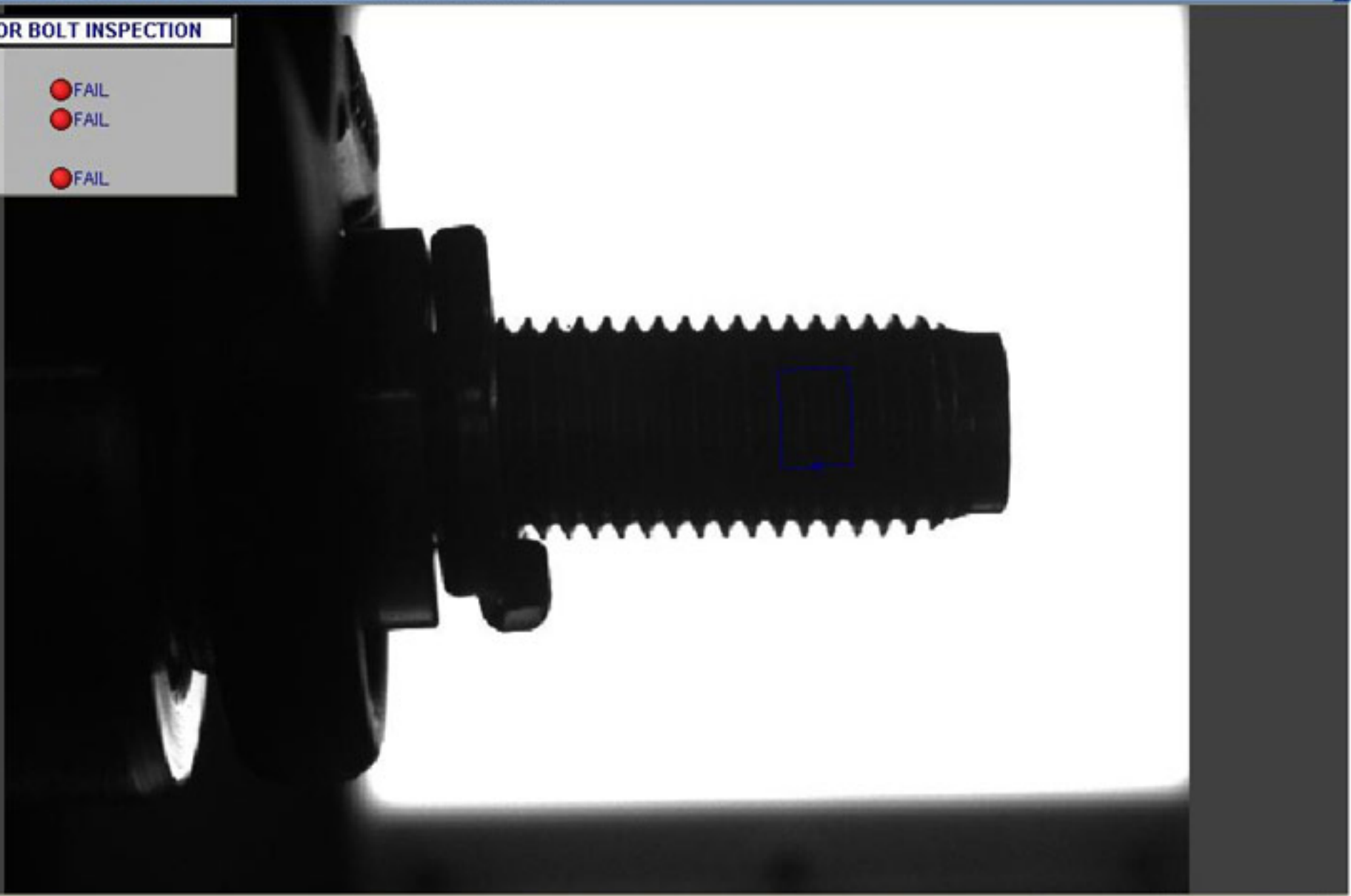
File Edit View Insert Format Image Sensor System Window Help

Address bar: Ana | 10 | B | I | [Icons]

A70 - TAKATA ANCHOR BOLT INSPECTION

### TAKATA ANCHOR BOLT INSPECTION

MODEL STS:	● FAIL
ASSEMBLY STS:	● FAIL
OVER ALL STS:	● FAIL



Pixel Value @ (358,232) = 255 | 0.9 ms | Offline

start | [Icons] | Altered takata 3 m... | Backups | In-Sight Explorer - ... | PRINT 3.JPG - Paint | [Icons] | 2:12 PM

In-Sight Explorer - admin - [is5100\_0137af - LucasWiper1.job]

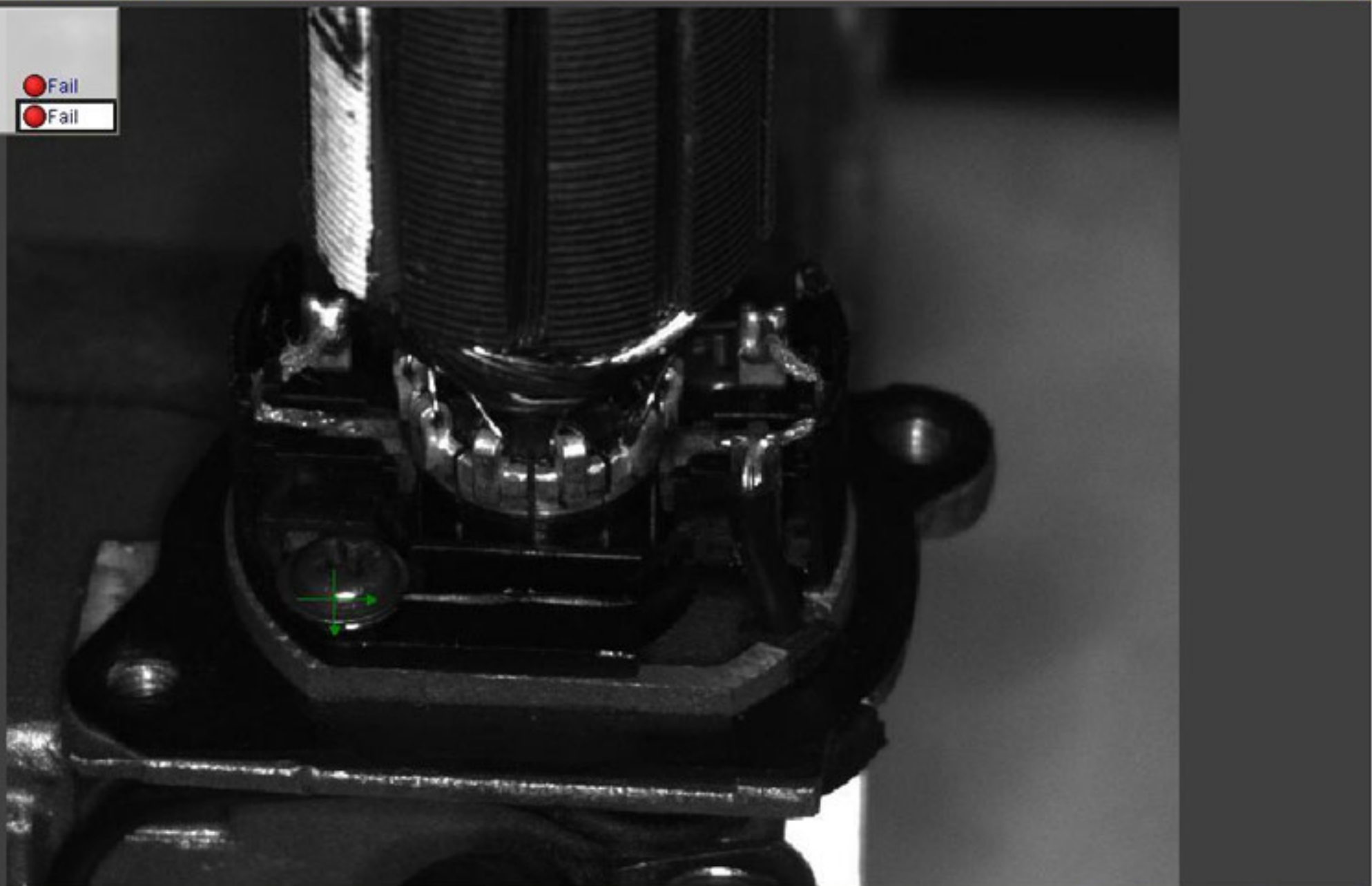
File Edit View Insert Format Image Sensor System Window Help

100%

Arial 9

D16 = Status(\$I11,"Pass","xxxx","Fail")

**Job Result**  
Left Side Status: ● Fail  
Right Side Status: ● Fail



(226,231) = 68

745.5 ms Offline

start In-Sight Explorer - ad... 4:27 PM

In-Sight Explorer - admin - [is5100\_0137af - Turbo\_Paiyanoor\_1.job]

File Edit View Insert Format Image Sensor System Window Help

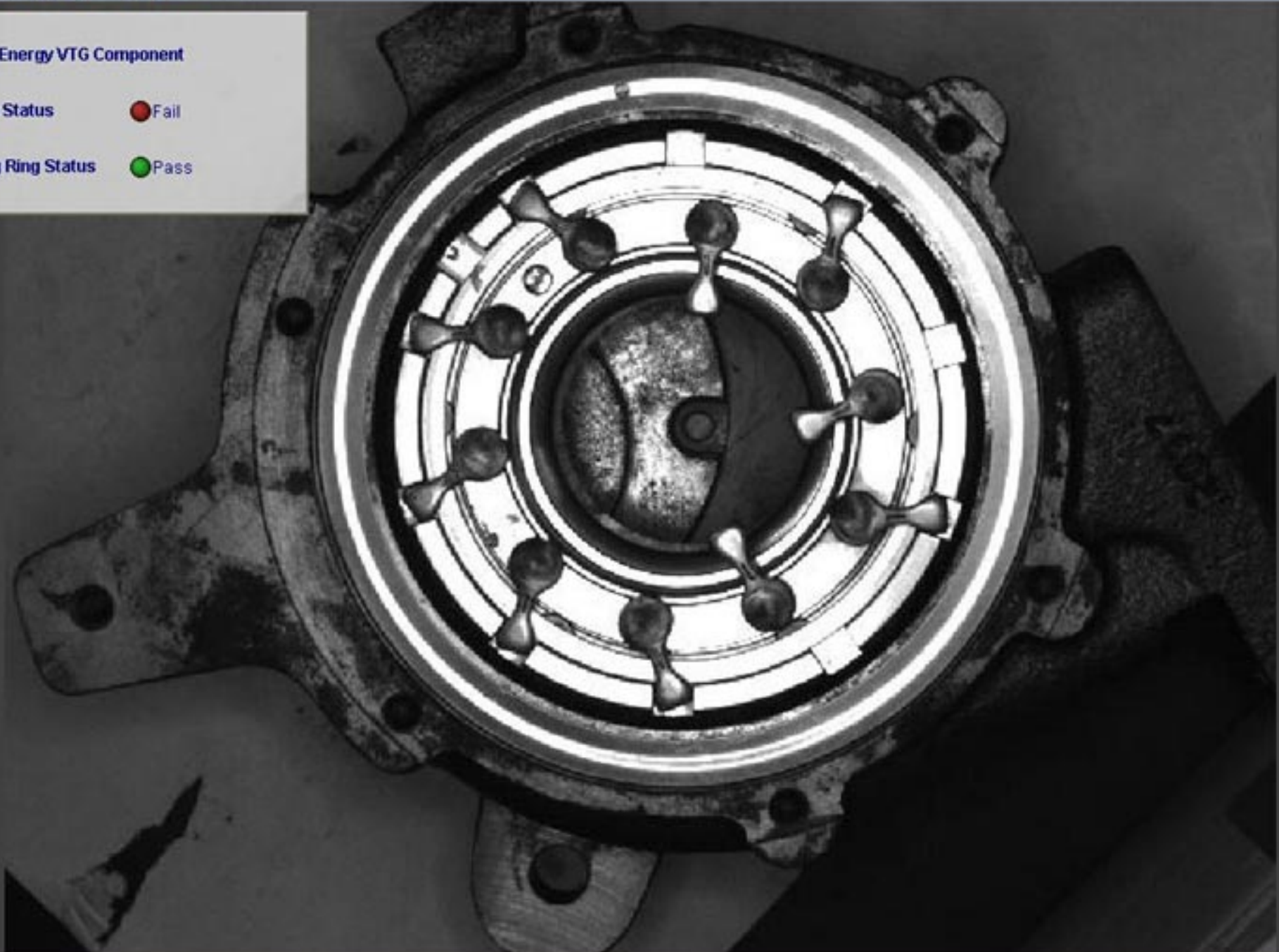
100%

K1 =

Turbo Energy VTG Component

Vanes Status ● Fail

Ceiling Ring Status ● Pass

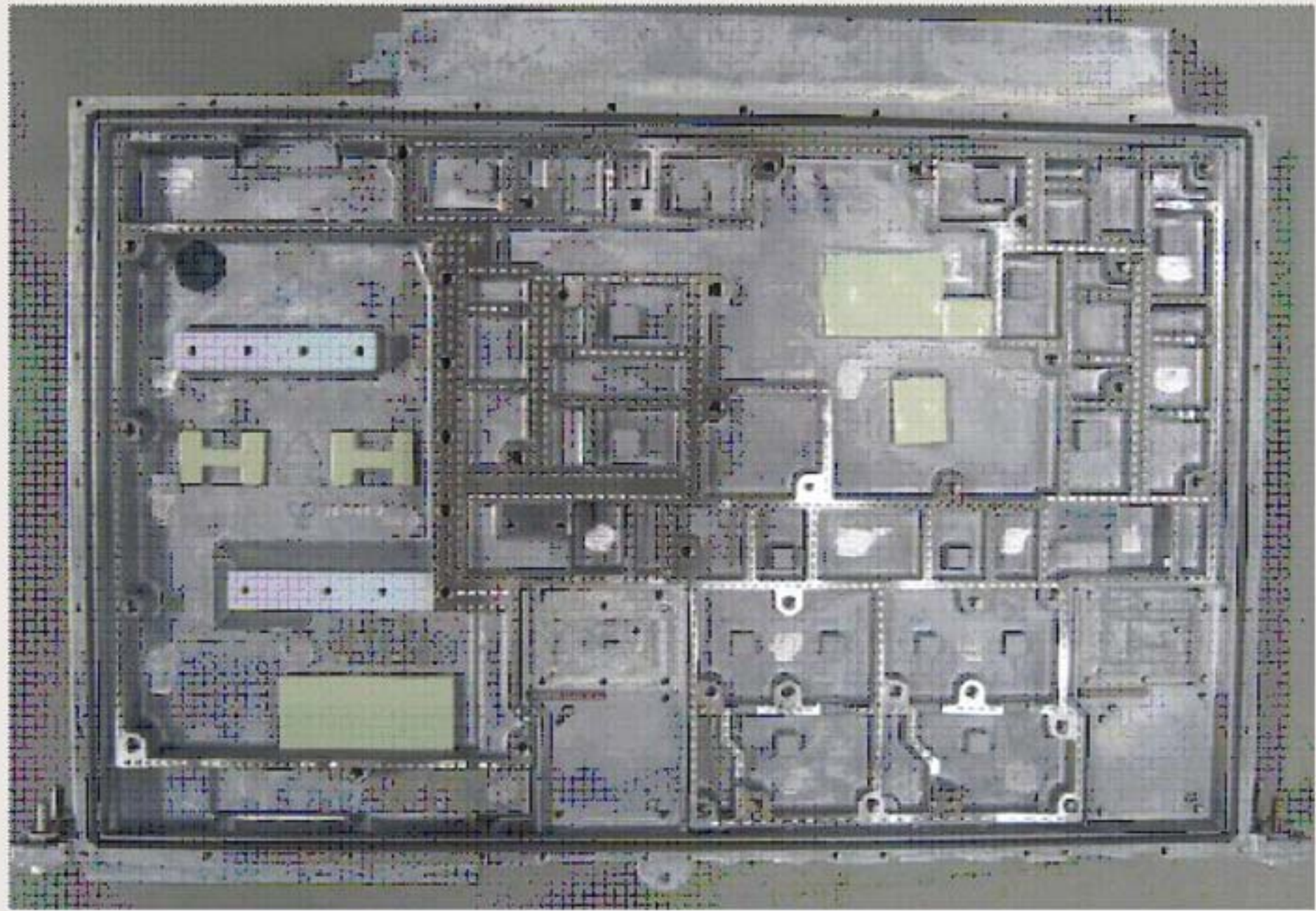


start

Microsoft Excel - Dest... Results\_Fluorescent In-Sight Explorer - ad...

Offline 6:23 PM

Vision inspection for presence & positions of correct revert pins, insulation pads of telecom tower equipment



In-Sight Explorer - admin - [ARCEE - Spreadsheet View]

File Edit View Insert Format Image Sensor System Window Help

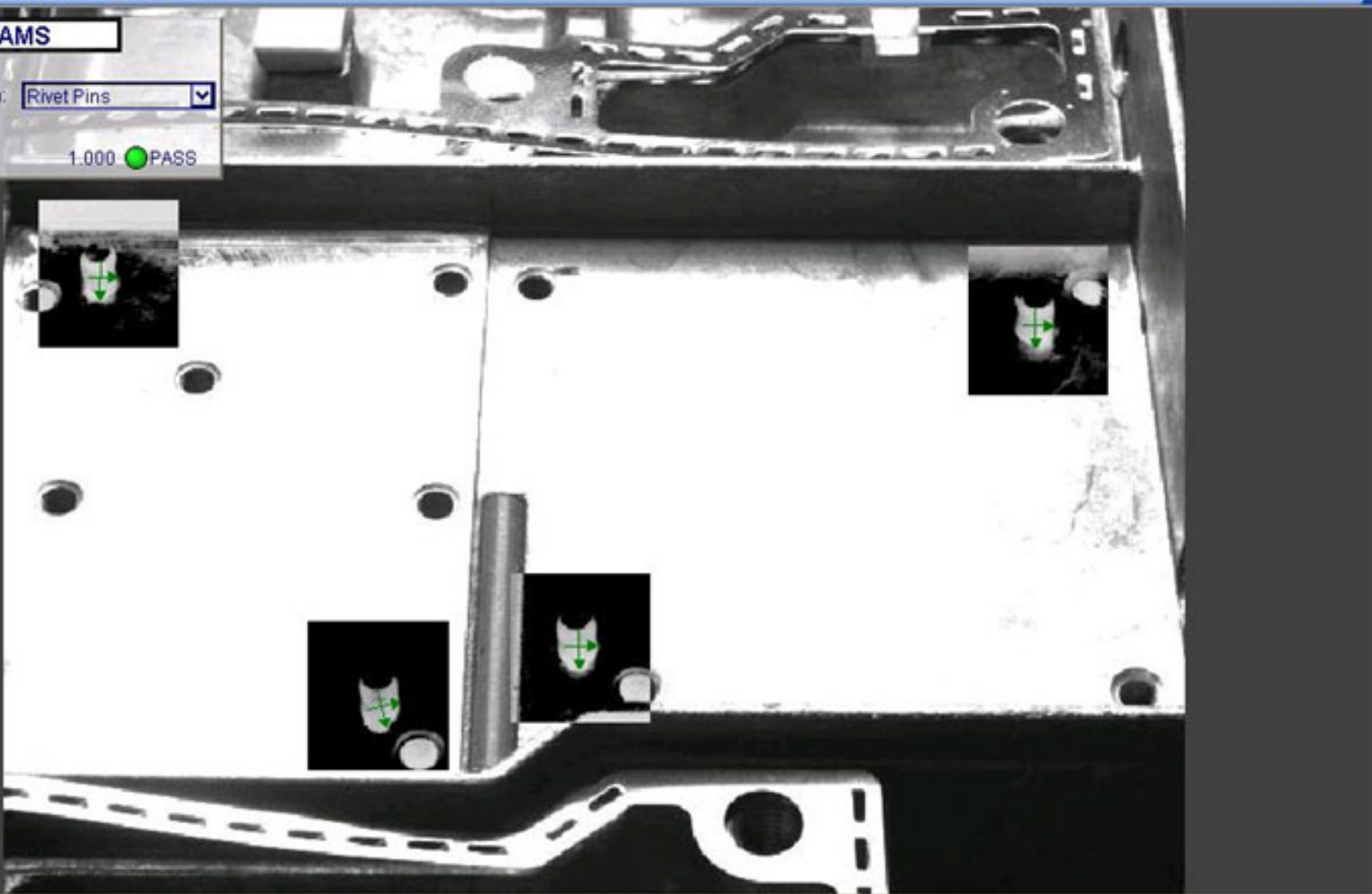
Arial 12 B / [Rich Text Editor]

02 = ASHLEYALTEAMS

**ASHLEYALTEAMS**

Select the inspection: Rivet Pins

Result: 1.000 ● PASS



A20: Pixel Value @ (307,311) = 0 0.0 ms Offline

start [Taskbar icons: Outlook Express, In-Sight Explorer - ad...] 1:44 PM

In-Sight Explorer - admin - [ARCEE - Spreadsheet View]

File Edit View Insert Format Image Sensor System Window Help

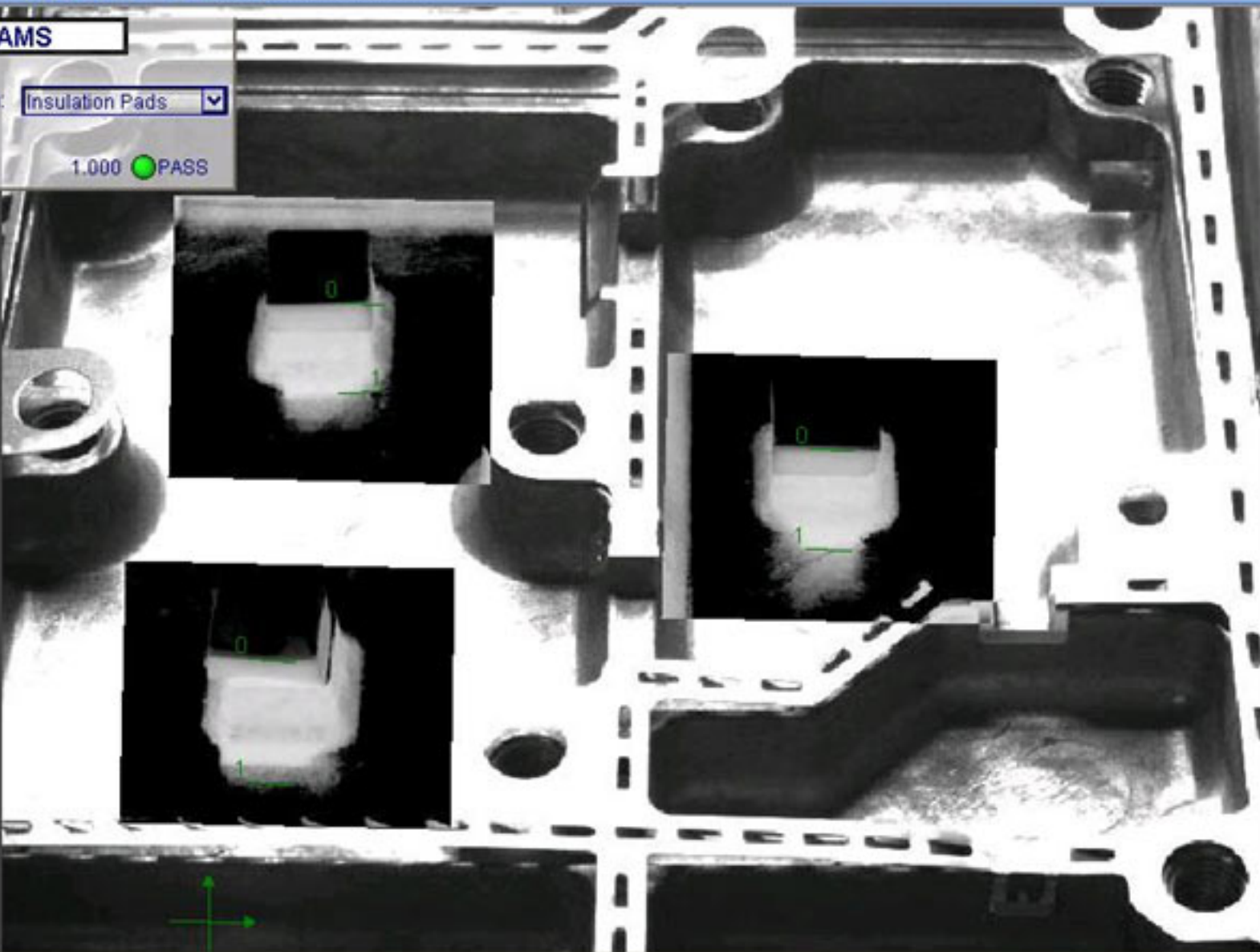
Arial 12 B I

02 - ASHLEY ALTEAMS

### ASHLEY ALTEAMS

Select the inspection:

Result: 1.000 ● PASS



Pixel Value @ (265,150) = 255

0.6 ms Offline

start | Inbox - Outlook Expr... | In-Sight Explorer - ad... | Pad1\_OK.JPG - Paint | 1:48 PM

